

# Q4 2021 RADIOLOGY UPDATE

New 3T MRI | Preventative Screenings | Webinars | And more...

We are dedicated to fostering successful relationships with our referring providers and our physician liaison team is here to support you.

We respond quickly to your questions and concerns.

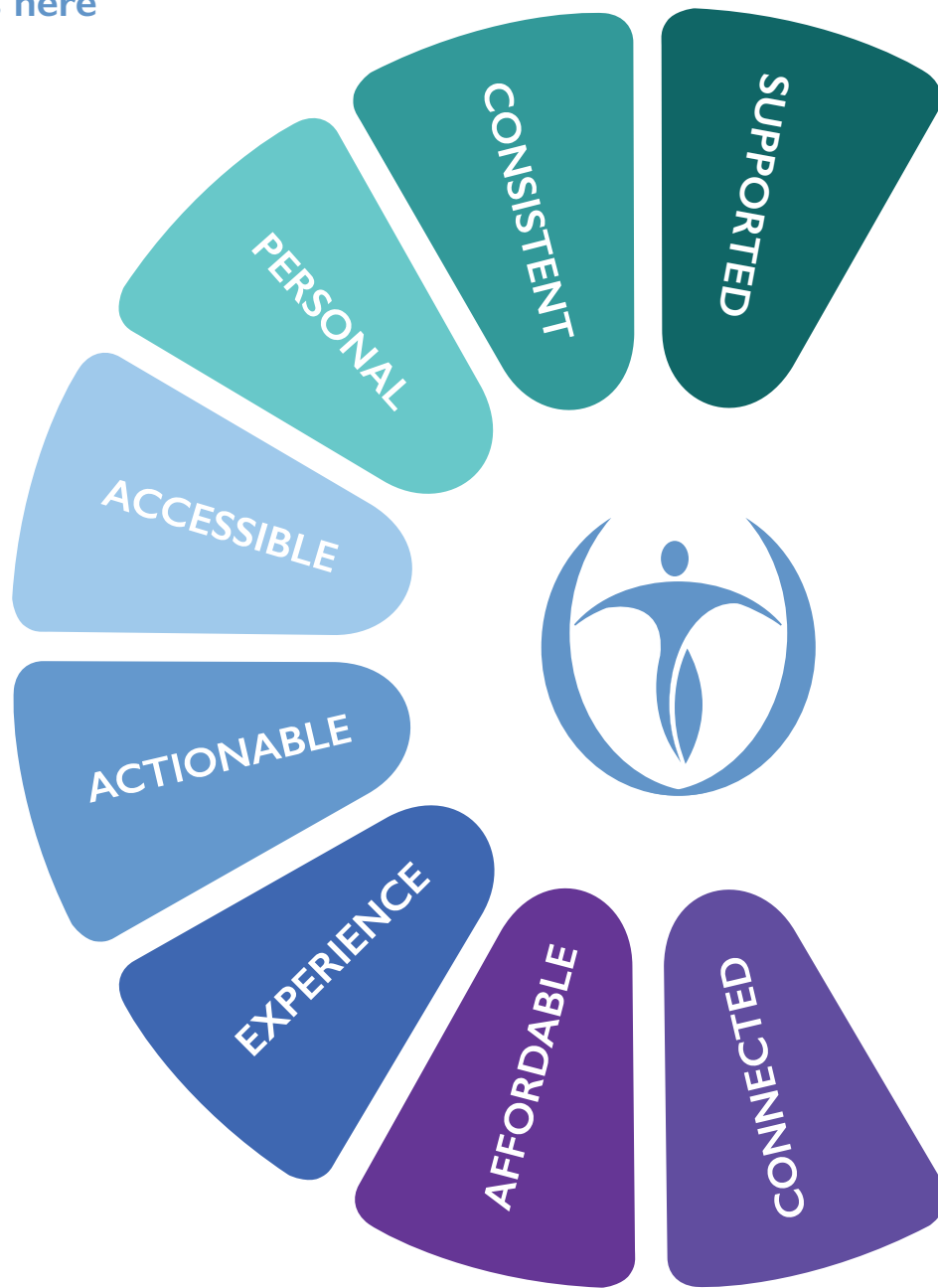
---

We provide access to a robust clinical decision support network.

---

We connect clinicians to online tools that simplify access to radiology results.

---



# Industry-Leading 3T MRI Technology

**Wake Radiology has long been the Triangle leader in MRI.**

Today, we continue our investment in advanced imaging by introducing the **MAGNETOM Lumina 3T MRI**.

Scheduling for this open bore 3T MRI starts in November 2021.



Scheduling  
opens in  
November

## Benefits of Our MAGNETOM Lumina 3T MRI

### Enhanced Patient Experience

Extra space offering a 70cm open bore design, lightweight coils, and free-breathing sensors for patient comfort.

### Speed & Efficiency

3T MRI enables faster, more detailed scans to minimize motion artifacts.

### Adaptability & Consistency

BioMatrix Tech adapts to patient differences, reducing exam variations and rescans while enhancing imaging.

### Precision

Increased sensitivity enables higher resolution images for clearer clinical detection.

# Return to Care!

## Preventative Screenings Available Now

Recent research shows dramatic declines in screenings and preventative cancer-related care due to the COVID-19 pandemic. Join us in our return to care commitment and discuss missed screenings with your patients.

Wake Radiology UNC REX is committed to providing a patient-centric experience designed to help people catch up on their preventative health screenings.

As patients return to care, they can expect a safe, clean environment and quality medical imaging. We offer online registration, text on arrival and extensive cleaning protocols.

### Screening Studies

---

3D screening mammography with AI technology

Low-dose CT lung cancer screening

Bone density studies (DXA)

CT coronary calcium scoring

*Patients should contact their insurance company to determine if their plan covers screenings or other imaging exams. Wake Rad UNC REX offers a time-of-service discount and interest-free payment plans. Questions about billing and out-of-pocket expenses?*

*Email our billing department: [askbilling@wakerad.com](mailto:askbilling@wakerad.com)*

## 3D Screening Mammography with AI

Wake Rad UNC REX is the first outpatient imaging practice in the Triangle to adopt FDA cleared artificial intelligence (AI) technology for use with 3D mammography. Our AI platform runs in the background while our breast imaging radiologists interpret images. It marks areas of concern for a closer look. This AI tool aids our doctors in detecting breast cancer and improving patient care and outcomes.

### Did You Know?

- Saturday mammogram appointments are available at multiple locations
- FREE 3D mammograms throughout the year - follow us on social media for details!
- Uninterrupted FDA certification
- Continuous ACR accreditation
- First outpatient provider in the Triangle to earn the ACR's top designation as a Breast Imaging Center of Excellence (BICOE)
- Maintained BICOE designation since 2008

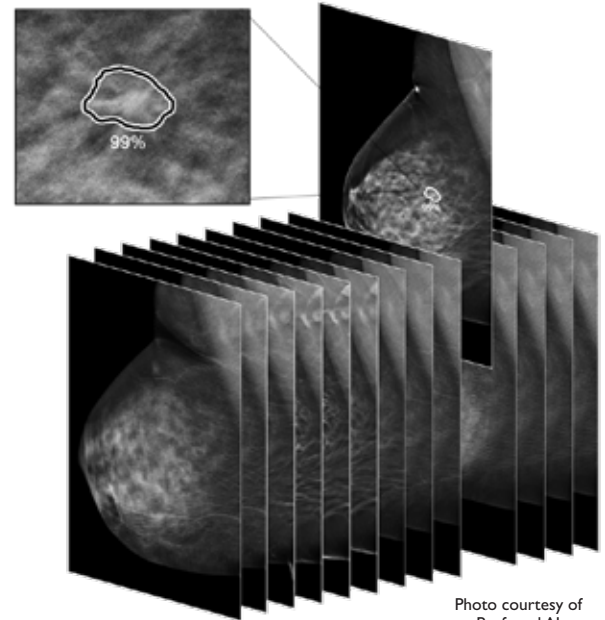


Photo courtesy of  
Profound AI

### Advanced DXA with Medical AI Technology

Trabecular Bone Score Software for DXA is coming in early 2022 to the Wake Rad UNC REX Breast Care Center on Duraleigh Road.

Simple, rapid and reproducible

Enhances our ability to detect osteoporosis fracture risk

Improves patient management

## Bone Densitometry (DXA)

DXA is the gold standard for detecting early bone loss and Wake Rad UNC REX is the only imaging provider in the Triangle certified by the International Society of Clinical Densitometry.

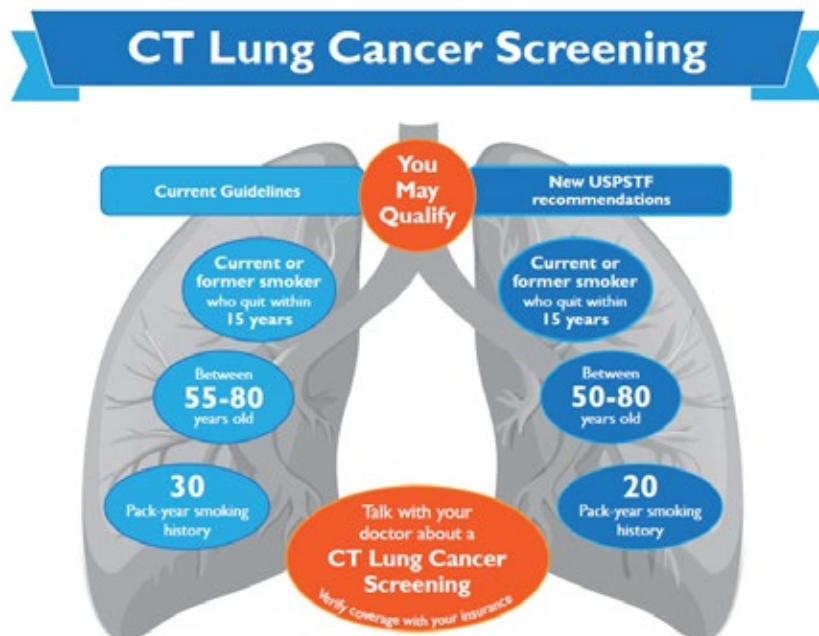
### Did You Know?

- Our team has expertise in all aspects of DXA scans including adult, pediatric, vertebral fracture assessment and body composition.
- Patients can get their DXA scan and their mammogram at the same time. Just have them ask our Scheduling Team when they make an appointment.

## Low-Dose CT Lung Cancer Screening

CT scans can depict tumors significantly smaller than 1.0 centimeters and have the potential to detect lung cancer in its earliest stage before disease progression. No special prep is required and patients can be in and out in 30 minutes or less.

To qualify for a low-dose Lung Cancer Screening, patients must be asymptomatic with no acute disease signs/indicators at the time of scheduling. A provider order is required.



## Coronary Calcium Scoring

Coronary Calcium Scoring is a CT study that is the single most accurate assessment of heart attack risk. This imaging study is endorsed by the American Heart Association and is the only non-invasive method that can directly identify atherosclerotic plaque build-up. This study is not regularly covered by insurance. A provider order is required.



# Ask a Radiologist

A webinar series to ensure the right exam is performed for the right clinical indication.



**To Order or Not  
Order IV Contrast**  
Matthew Hoimes, MD, MS  
Body Imaging Radiologist



**Breast Imaging  
Standards of Care**  
Monica Reddy, MD  
Breast & Body Imaging Radiologist



**Prostatic Artery  
Embolization**  
Matthew Miller, MD  
Interventional Radiologist

**Our new webinar series is off to a successful start.**

You can watch these presentations through our Provider Portal.  
[ProviderPortal.WakeRad.com](http://ProviderPortal.WakeRad.com)

**There is more to come!**

New webinars are coming later this year. Let your Physician  
Liaison know if there's a topic you'd like us to cover.

# COVID-19 Protocol Reminder

**Wake Rad UNC REX has designated three imaging sites for PUI and those diagnosed with COVID-19.** Chest x-rays may be performed at any of these three locations. Chest CT scans are scheduled through our Scheduling Team at 919-232-4700 and performed at the North Hills Diagnostic Center.

## Walk-in X-ray Instructions

**1**

### Educate

Give your patient our office address and phone number.

**2**

### Call

Let us know your patient is on the way. Call the specific office listed below.

**3**

### Wait

Instruct your patient to wait in their car and call to register when they arrive.

## Our Convenient Locations

### Holly Springs

781 Avent Ferry Rd.  
Suite 104  
919-567-6140 (opt. #1)

### Knightdale

6602 Knightdale Blvd.  
Suite 108  
919-788-1970 (opt. #1)

### North Hills

3821 Merton Drive  
919-232-4702 (opt. #1)

## Wake Radiology Returns to Johnston County

Wake Radiology is excited to announce that after a 10 year hiatus, our subspecialty radiologists have been awarded the reading contract for Johnston Health in Smithfield and Clayton. This is a return to care at the hospital for Wake Radiology. Previously, the practice provided radiology services to Johnston Health for nearly 25 years.

“We’re excited to be partnering with Johnston Health again,” said Lyndon Jordan III, MD, FACR, President and Managing Partner at Wake Radiology. “Our doctors are committed to providing quality and compassionate care to all of our patients. We believe our team’s expertise and focus will enable us to provide subspecialty diagnostic imaging and interventional services to patients right in their hometown hospital.”

In addition to Johnston Health, Wake Radiology provides inpatient, hospital-based radiology services to UNC REX Healthcare in Raleigh and to Maria Parham Health facilities in Henderson and Louisburg.

## Your Physician Liaison Team & Resources



**Katie Ostendorf**  
919-622-6407  
[kostendorf@wakerad.com](mailto:kostendorf@wakerad.com)



**April White**  
Dir. Of Physician Outreach  
919-632-3318  
[awhite@wakerad.com](mailto:awhite@wakerad.com)



**Jill Batkiewicz**  
919-630-6023  
[jbatkiewicz@wakerad.com](mailto:jbatkiewicz@wakerad.com)

**PACS Access**  
[providerconnect.wakerad.com/Portal/app#/](http://providerconnect.wakerad.com/Portal/app#/)

**Wake Rad UNC REX Physician Hotline**  
919-788-7880

**Wake Rad UNC REX Ordering Guide**  
request a copy from your physician liaison

**Connect on LinkedIn**  
[linkedin.com/company/wake-radiology](https://linkedin.com/company/wake-radiology)